



> **MT2168 STANDS FOR RELIABILITY, ACCURACY AND EASE OF OPERATION.**

The design of the MT2168 optimises stability and maintenance requirements:

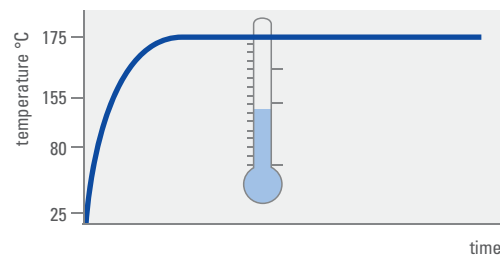
- only 5 handling steps
- easy access

The MT2168 facilitates packages style conversion:

- minimum number of conversion kit parts
- self teaching processes without manual adjustments
- conversion within 10 minutes

The MT2168 shows excellent temperature accuracy.

- ambient-hot temperature range up to 175° C
- temperature accuracy +/- 1° C at contact site
- heat-up to 155° C within 15 minutes



> **FOR MORE INFORMATION**

- please contact the Multitest sales team:

Multitest Germany

Rosenheim, Tel. +49-8031-406-0
sales europe@multitest.com

Multitest Singapore

Tel. +65-6741-5977
sales asia@multitest.com

Multitest USA

San Jose, Tel. +1-408-954-0290
sales usa@multitest.com



MT2168

- visit www.multitest.com/MT2168

- or see us at the Semicon shows (more information about Multitest at the trade shows: www.multitest.com/shows)

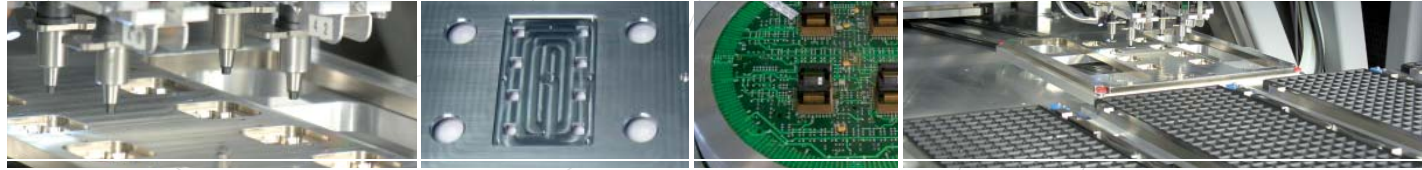
the new benchmark for ambient/hot pick and place handling

>> www.multitest.com

significantly reduces Cost of Test

MT2168

substantially reduces cost of test.



> BEST RETURN ON INVESTMENT:

Requirements in final test constantly change. The MT2168 perfectly adapts to the needs of the actual test environment today and tomorrow. The MT2168 can be customized to existing test interfaces, different automation and speed levels and package types.

> BEST EFFICIENCY:

Shorter test times and multi-site capabilities of the testers force the handling equipment to keep pace! The MT2168 allows to fully benefit from enhanced tester performance. The MT2168 optimises test cell utilisation.

> BEST PRODUCTIVITY:

100% uptime and 100% first pass yield are ideal conditions in high-volume production. The MT2168 stands for the reliability, accuracy and ease of operation needed.

> THE MT2168 IS CONFIGURABLE TO THE REQUIREMENTS OF

- > engineering sites and
- > high-volume production at IDMs and test houses.

> THE MT2168 FACILITATES PROCESS TRANSITIONS AND COOPERATION BETWEEN BUSINESS PARTNERS.

- > The base handler is scalable from “engineering” set-up to high-end in order to optimise for
 - parallelism
 - test time and
 - throughput

Upgrade in the field is possible.

- > The contact sites are flexible by number and site pitch layout in order to ensure
 - FULL compatibility to ALL existing loadboards

Site pitch option allows easy adaptation in the field.

- > Conversion kits support a wide package range:
 - available for typical devices provided in trays (3 x 3 mm up to 70 x 70 mm)

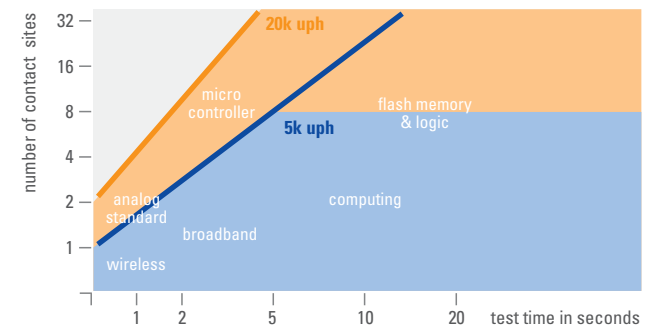
Packages style conversion takes less than 10 minutes.

> THE MT2168 OPTIMISES TEST CELL UTILISATION

The high speed and high parallelism of the MT2168 fully leverage the capabilities of the tester:

- maximum throughput of up to 20,000 uph
- index time of 0.38 s
- up to 16 contact sites
- minimum soak capacity equal to 3.5 JEDEC trays

> TEST CELL CAPACITY



Tester utilisation depends on parallelism and throughput